

DAG Level switch (top mounted type) facilitates any number of pre-determined level controls initiating audio-visual signals with a single unit. It is designed to provide reliable operation in several industrial applications. The unit consists of a vertical guide pipe (stem), within which are located the sensor switches, magnetic float sliding over the stem according to the level in the tank, switch terminal housing (head) and necessary mounting connection.

The switch operates on the basis of float principle with magnetic transmission to reed switch.

The switch is encapsulated in the stem and it is actuated by a permanent magnet within the float.

SPECIFICATIONS

Switch : Hermetically Sealed magnetically operated reed switch with Rhodium contacts SPST/SPDT completely isolated from medium

Rating : 0.5A 240 VAC. Switch rating will be 15 watts. Higher ratings upto 250 watts is optional

Float & Stem : SS-304 / SS-316

Wetted parts : SS-304 / SS-316

Enclosure : Cast Al., Epoxy powder coated
Weatherproof to IS:13947, IP65
Flameproof to IS:2148
Gas Group I, IIA & B, IIC, T6

Cable Entry : 3/4" ETF / 1/2" NPTF

Process Con. : Screwed / Flanged

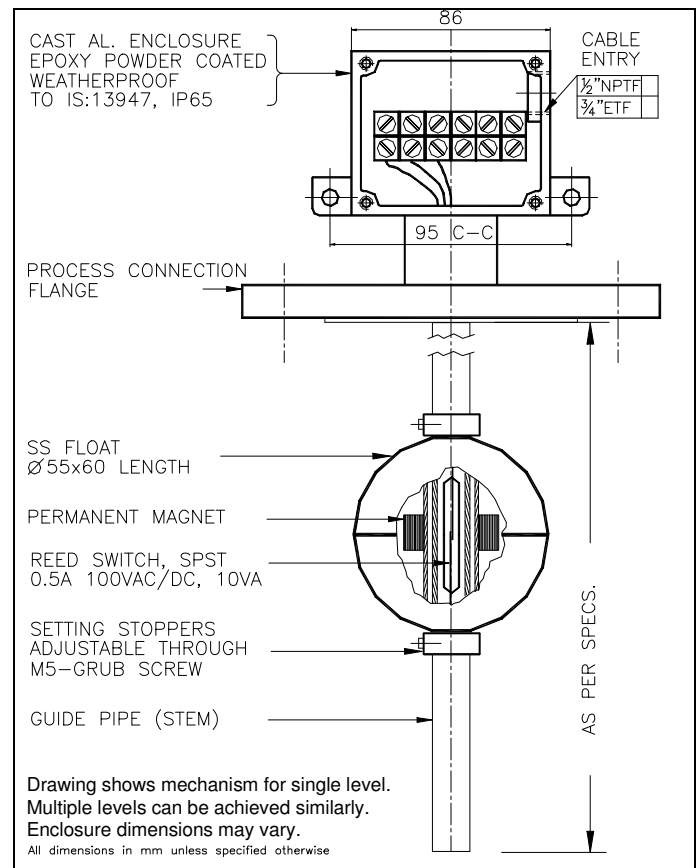
Stem Length : Upto 3 meters

No. of switch : As per customers requirement

Differential : Fixed Minimum < 5-10 mm

Max. Pres. : 5 kg/cm²

Max. Temp. : 150 °C



SALIENT FEATURES

- Since the switches operate on the principle of magnetic flux coupling with no mechanical connection, fluid contamination of switch components cannot occur.
- Only one moving component exists, that is, the no-wear float.
- Reliable in operation due to the large gap between the slide tube of the float and the fixed guide tube.
- Insensitive to dirt particles in the liquid.
- Several levels can be monitored by several reed contacts in the guide tube even with one float.
- Suitable for any fluid compatible with material of construction and specific gravity above 0.7.
- Operate in any position from vertical to an inclined angle of 30°, head assembly upward or downwards.
- Closing, opening or change over contacts can be selected.
- Factory set level actuation points can be easily adjusted at site.
- Minimum possible distance between 2 level set points is 75 mm.
- All the floats and stoppers can be removed through bottom side of the stem, if necessary, for easy installation in your vessel and retain them to their original position.

INFORMATION REQUIRED TO QUOTE

Materials of construction, service medium, specific gravity, maximum pressure and temperature, number of actuating levels & their distances from top of the connection and type of process connection. Also specify the condition of each switch required whether switch should close/open on fall/rise of the level and if latch-on of contacts is necessary.

Dag Process Instruments Pvt.Ltd.

C4 Nandanvan Industrial Estate, Opp. ACC Research Centre, LBS Marg, Thane 400604

Phone: 25812695, 25812710 Fax: + 91-22-25832311 Email: dagprocess@vsnl.com

Manufacturers of Pressure, Level, Flow, Temperature Switches & Pressure, Air Flow Transmitters

Visit our site : www.dagprocess.com