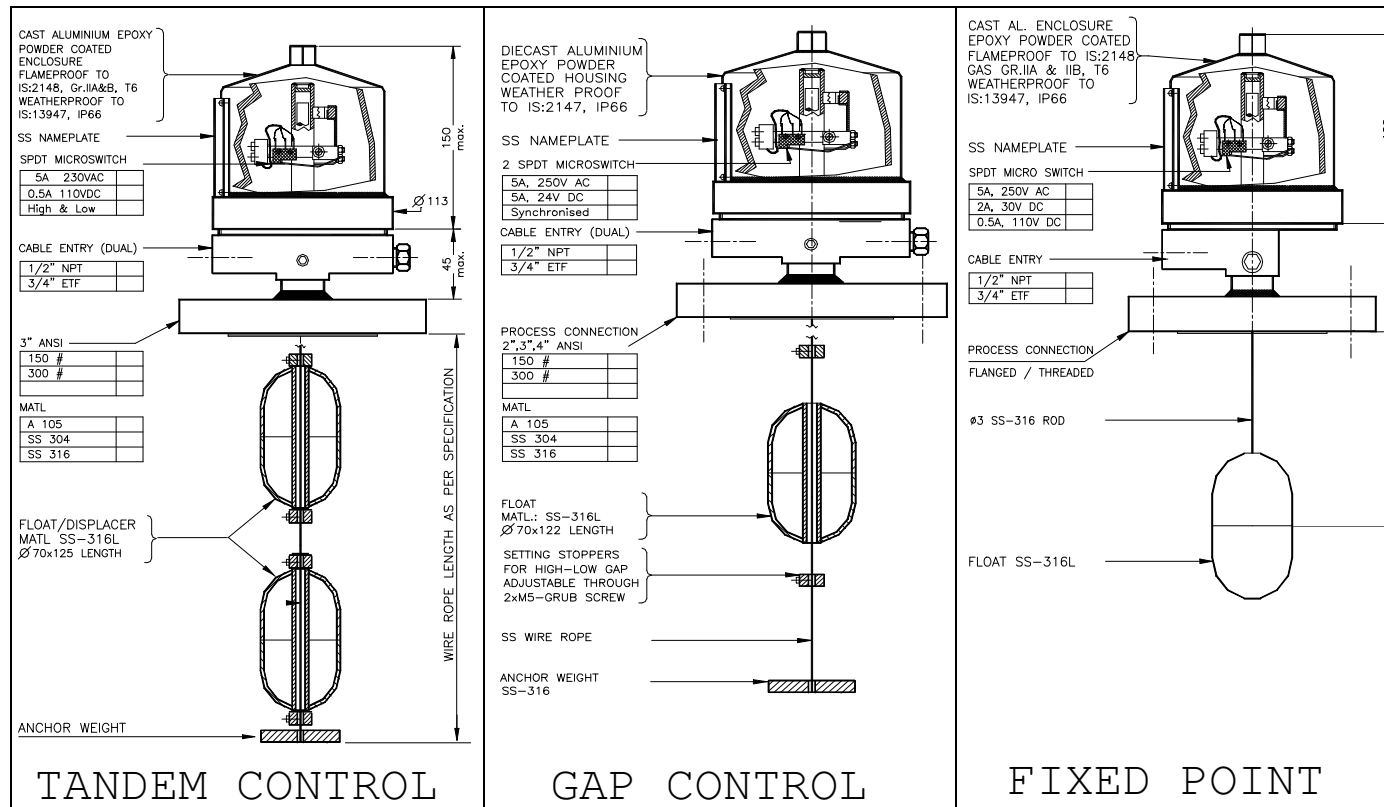


Archimedes principal states that a body when immersed in a liquid will be buoyed upwards by a force equal to the weight of the liquid displaced.

The Float / Displacer (attached to a load spring) loses weight due to buoyancy, thus moves up and down with Rise / Fall of liquid level. Rise in liquid level moves float upwards which carries a Magnetic Sleeve attached to a connecting link upwards inside process seal pipe. When this Magnetic sleeve enters Permanent Magnet's flux zone magnet swings towards seal pipe. This movement of magnet Actuates an SPDT (NO-COM-NC) microswitch and vice-a-versa action on liquid level falls.



- Element** : Float / Displacer, Standard sizes Ø70x125, Ø48x130, Ø89x130, mm (Other on Request)
- Pressure** : 150, 80, 50, 40, 55 kg/cm², (Unlimited Pressure on Request)
- Materials** : SS-316L, (Monel, CS, PP, PTFE, As Requested)
- Connection** : Flanged, Screwed
- Extension** : Rod SS-316, Wire Rope SS-316, (PP, Nylon or As Requested)
- Liquids** : Specific Gravity 0.1 to 1.6 (Level / Interface)
- Switch** : SPDT (NO-COM-NC) 5A 250VAC / 0.5A 110VDC / 5A 24VDC
Hermetically Sealed, Mercury, Reed, Pneumatic, Hall effect, Proximity Output
: Silver / Gold Plated contacts / Two SPDT
- Function** : Single Point / Dual Point, Gap / Tandem Control
- Limit Stop** : Prevents double actuation of the Switches
- Bonnet** : Finned below -40°C and above +175°C (Trace Heating / Jacketing optional)
- Enclosure** : Cast Aluminium, Epoxy Powder Coated (MS, SS if required)
: Weatherproof to IS:13947, IP66
: Flameproof to IS:2148, Group I, IIA, IIB or IIC, T6
- Cable Entry** : 1/2" NPTF / 3/4" ETF (Single / Double) 360° Rotatable Head
- IBR** : IBR certificate IIC optional on request

Dag Process Instruments Pvt.Ltd.

C4 Nandanvan Industrial Estate., Opp ACC Research Centre, LBS Marg, Thane 400604

Phone: 25812695, 25812710 Fax: + 91-22-25832311 Email: dagprocess@vsnl.com

Manufacturers of Pressure, Level, Flow, Temperature Switches & Pressure & Air Flow Transmitters

Visit our site : www.dagprocess.com

DAG LEVEL SWITCH, INSTALLATION OPERATION & MAINTENANCE MANUAL

Proper installation and operation is essential for long life and service of Level Switch.

- Check up the correct tag number of the Level Switch
- With a Level gauge confirm level switch setting
- Install on Firm and non vibrating isolation valves. The housing should be vertical & free from any tension from pressure or drain / vent pipe and cable connection
- Top mounted level switch should be mounted on a still well / stand pipe. Level setting could be checked by hand operation
- Before installation check float and wire rope for any damage in transit
- Check up loop for continuity, polarity and any wiring defects
- Do not try to move any part of magnet cradle assembly
- Check up level switch for the end use and secure the cover with gasket
- Proper cabling is necessary to meet Weatherproofness and Flameproofness
- If there is any sludge, scale formation it is advisable to clean periodically
- Isolate electrically before opening the enclosure
- Level switches are passive devices and hence can be used in intrinsically safe circuits with proper zenner barriers
- Keep Spares in weatherproof indoor conditions

Model De-Coding

FLP/	= Enclosure is flameproof and weatherproof	
WP/	= Enclosure is weatherproof	
LS	= Level Switch	
TT	= Top Mounted	
□□□	= Process Connection Size and Rating for TT (Only first 2 digits of Rating)	
SC	= Process Connection Screwed (size as per customer data sheet)	
GC / TC	= Gap Control (Wide Deadband) / Tandem Operation (2 Level Independent Control)	
I	= Interface	
B	= IBR approved with IIIC certificate	
P	= Pneumatic Out Put	
N	= As per NACE requirements (MR-01-75 SPECS)	
Examples	WP/LS-TT-415-TC Weatherproof Housing Level Switch, Top Mounted Flanged Connection, 4"ANSI 150# 2 level, Hi & Low independent switching	FLP/LS-TT-SC Flameproof & Weatherproof Housing Level Switch, Top Mounted Screwed Connection Fixed single set point

Dag Process Instruments Pvt.Ltd.

C4 Nandanvan Industrial Estate., Opp ACC Research Centre, LBS Marg, Thane 400604

Phone: 25812695, 25812710 Fax: + 91-22-25832311 Email : dagprocess@vsnl.com

Manufacturers of Pressure, Level, Flow, Temperature Switches & Pressure & Air Flow Transmitters

Visit our site : www.dagprocess.com