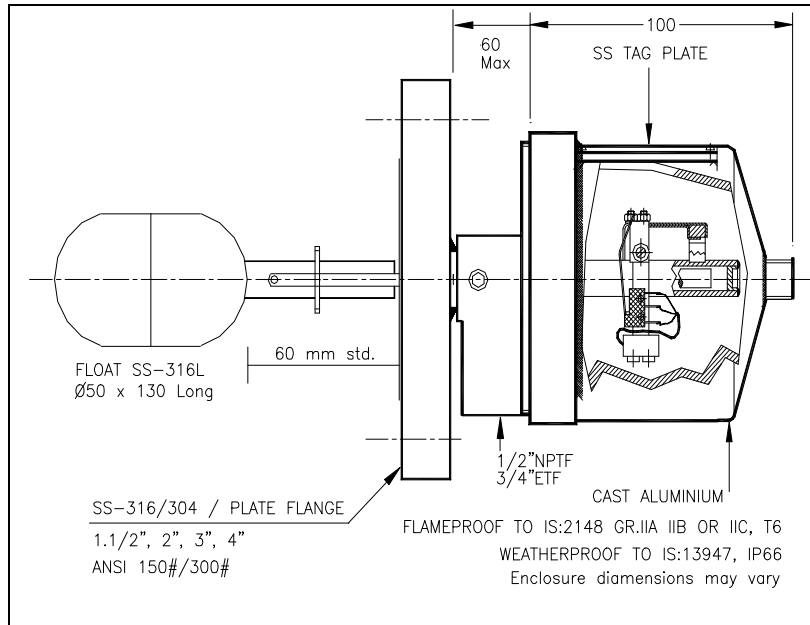


Archimedes principal states that a body when immersed in a liquid will be buoyed upwards by a force equal to the weight of the liquid displaced.

The **Float** loses weight due to buoyancy, thus moves up and down with **Rise / Fall** of liquid level. The Float extension encloses a **bar magnet** which retards another bar magnet inside the housing. This movement of the magnet actuates a **Microswitch** (SPDT, NO-COM-NC) and vice-versa action on falling liquid level.. Process Connection flange is an SS-316 or SS-304.



Model decoding

FLP/ : Flameproof to IS:2148
Gas Group IIA, IIB or IIC T6 &
WP/ : Weatherproof to IS:13947 IP66
LS : Level Switch
SM : Side Mounted
□□□ : Flange Size followed by first
two digits of Flange rating
SC : Screwed Connection 2" Min.
SP : Special Flange (As per client)

Example : WP/LS-SM-315
Weatherproof to IS:13947, IP66
Level Switch, Side Mounted
3" ANSI 150# Flange

Sensing Element	: SS-316/L Float Ø48x130, mm (Other sizes & materials on Request)
Extension	: SS-316/304 (PP, As Requested)
Pressure	: Atm., 15 kg/cm ² , 30 kg/cm ²
Specific Gravity	: > 0.6
Switch & Rating	: SPDT (NO-COM-NC), upto 5A 250VAC / 0.5A 110VDC / 5A 24VDC
Contacts	: Silver, Gold Plated, Hermetically Sealed, Two SPDT
Function	: Single Point
Limit Stop	: Prevents double activation of the Switches
Process Connection	: SS-316, SS-304, Plate flange 5mm thick, Ø17 x 4 Holes on 120.5 PCD 2"BSPM, NPTM, Other flange sizes on request
Enclosure	: Cast Aluminium, Epoxy Powder coated : : Flameproof to IS:2148, Zone 1&2, Gas Group IIA & IIB, T6 : Weatherproof to IS:13947, IP66
Cable Entry	: 1/2" NPTF, 3/4" ETF
Nozzle Projection	: 60, 95, 150 mm (or as Requested)
Approvals	: CMRI, ERTL, DGFASLI, BIS, CCE

Dag Process Instruments Pvt.Ltd.

C4 Nandanvan Industrial Estate., Opp ACC Research Centre, LBS Marg, Thane 400604

Phone: 25812695, 25812710 Fax: + 91-22-25832311 Email : dagprocess@vsnl.com

Manufacturers of Pressure, Level, Flow, Temperature Switches & Pressure, Air Flow Transmitters

Visit our site : www.dagprocess.com

DAG LEVEL SWITCH, INSTALLATION OPERATION & MAINTENANCE MANUAL

Proper installation and operation is essential for long life and service of Level Switch.

- Check up the correct tag number of the Level Switch
- Check operation by hand
- Before installation check Nozzle ID / Extension to facilitate float insertion, proper operation
- In case of possible jerking, put baffle plates or cage around the float area
- Install Horizontally with arrow on the flange upwards
- In Threaded types ensure that final tightening position is such that 'TOP' mark points skywards
- Check up loop for continuity, polarity and any wiring defects
- Do not try to move any part of magnet cradle assembly
- Check up level switch for the end use and secure the cover with gasket
- Proper cabling is necessary to meet Weatherproofness and Flameproofness
- If there is any sludge, scale formation it is advisable to clean periodically
- Isolate electrically before opening the enclosure
- Level switches are passive devices and can be used in intrinsic safe circuits with proper zenner barriers
- Keep Spares in weatherproof indoor conditions

Dag Process Instruments Pvt.Ltd.

C4 Nandanvan Industrial Estate, Opp. ACC Research Centre, LBS Marg, Thane 400604
Phone : + 91-22-25812695, 25812710 Fax : + 91-22-25832311 Email : dagprocess@vsnl.com
Manufacturers of Pressure, Level, Flow, Temperature Switches & Pressure, Air Flow Transmitters
Visit our site : www.dagprocess.com