



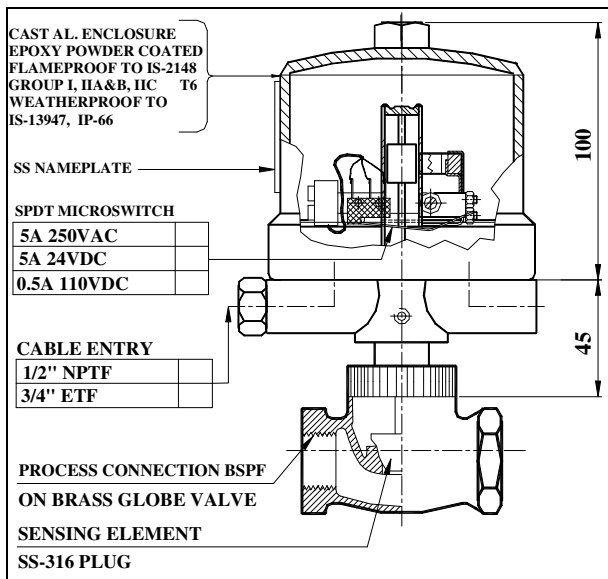
DAG FLOW SWITCH (PLUG TYPE)

DAG Flow switches are **Globe Body Design** used to detect **Flow / No-Flow** condition in a flow line. With sufficient **Differential Pressure** upstream and downstream of a calibrated **Flow Plug**; fluid flow is established. Increase in fluid flow moves the Flow Plug upwards which carries a **Magnetic Sleeve** attached through a **Connecting Link**, upwards inside a process seal pipe. When this Magnetic Sleeve enters the **Flux zone**, a permanent magnet swings towards the seal pipe. This movement actuates a Microswitch (**NO-NC-COM**) change-over contacts and vice-versa. (**Calibration** has to be done against a Rotameter in work shop and is slightly settable). Mainly Flow-No Flow detection is achieved.

Flow of Fluid is important and not the Pressure in the system. (The flow switch works as a non return valve also).

Flow Switch with plug can be replaced with Flow Disk, Lift Check or a Pig Locator for other applications.

The standard switch has Brass Globe Valve Body, an SS Flow Plug, IP66, Cast Aluminium enclosure, SPDT Microswitch. & 3/4"ETF cable entry. (Flameproof Version to IS-2148 Gas Group I, IIA & IIB, T6)



Model decoding

- WP/** : Enclosure Weatherproof to IP66
- FLP/** : Enclosure Flameproof to Gr.IIC, T6 or
- FLP/** : Enclosure Flameproof to Gr.IIA & IIB, T6
- FS** : Flow Switch with SS flow Plug
- 25G** : 1" BSPF on Brass Body
- 40G** : 1½" BSPF on Brass Body
- 50G** : 2" BSPF on Brass Body
- F** : Flanged Process Connection

Example :FLP/FS-40G

Flameproof to Gr.IIA & IIB T6
& Weatherproof to IP66
Flow Switch, (Flow/No-Flow Detecting)
1½" BSPF Brass Globe Valve

Specifications

- Enclosure** : Cast Aluminium, Epoxy Powder Coated (SS/MS on request)
: Flameproof to IS:2148, Gr.IIA & IIB or Gr.IIC, T6
: Weatherproof to IS:13947; IP65, IP66 (IP-67 on request)
- Mounting** : In-Line
- Adjustment** : Internal
- Element** : Flow Plug
- Material** : SS-Plug, Brass Globe Valve Body (SS/CS optional)
- Switch** : SPDT Snap Acting Micro (2 SPDT optional)
- Rating** : Upto 5A 250VAC / 5A 24VDC / 0.5A 110VDC
- Contact** : Silver / Gold Plated / Hermetically Sealed
- Differential** : Fixed minimum < 20%
- Repeatability** : ± 2%
- Temperature** : -10° to +100° C
- Process Conn.** : ½", ¾", 1", 1.½", 2" BSPF / Flanged
- Cable Entry** : ¾"ETF, ½"NPTF (Others through adapter)

Dag Process Instruments Pvt.Ltd.

C4 Nandanvan Industrial Estate., Opp ACC Research Centre, LBS Marg, Thane 400604
Phone: + 91 22 25812695, 25812710 Fax: + 91 22-25832311 Email: dagprocess@vsnl.com
Manufacturers of Pressure, Level, Flow, Temperature Switches & Pressure, Air Flow Transmitters
Visit our Site : www.dagprocess.com