

The heart of **DAG** temperature switch is a **German** make **Jumo** vapor filled thermostat, one of the best available in the world.

The sensor is an **SS-316** rigid stem (max. 1m. long). Alternatively flexible capillary for remote mounting can be provided (max. 1 m. long).

The stem can be inserted in a thermowell and tightened at the required height by using movable (adjustable) connector. In case of flexible capillary the bulb can be inserted in the thermowell (**Bulb Ø 6.5 - 7 mm**).

Alternatively a welded flange on the stem can be directly mounted on to the vessel. However in this case the stem length is not adjustable.

Model decoding:-

- WP/** : Weatherproof enclosure
- FLP/** : Flameproof enclosure
- TS** : Temperature switch
- : Maximum Range

Example : FLP/TS-110
(Flameproof Temperature Switch, range 110°C)

Specifications

Enclosure : Cast Aluminium, Epoxy Powder Coated
: Weatherproof to IS:13947; IP66
: Flameproof to IS:2148, Zone 1&2, Gas Group IIA & IIB, T6

Sensing Type: Vapour filled capillary
Sensor : SS-316 Rigid Stem, Ø9.5 x 1000mm max.
: Flexible capillary, 1000mm max.

Ranges : 0-100°C, 30-110°C, 50-300°C

Adjustment : Internal knob with Indicating scale

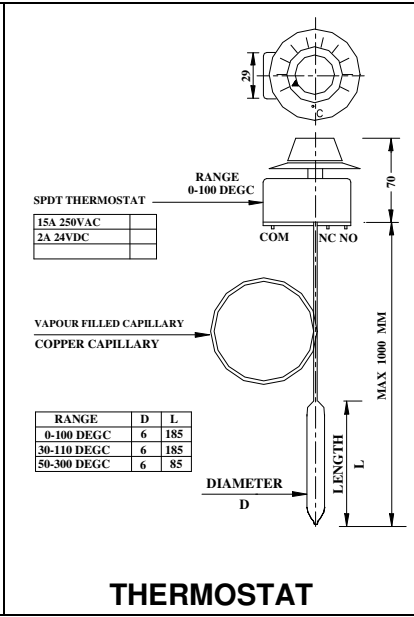
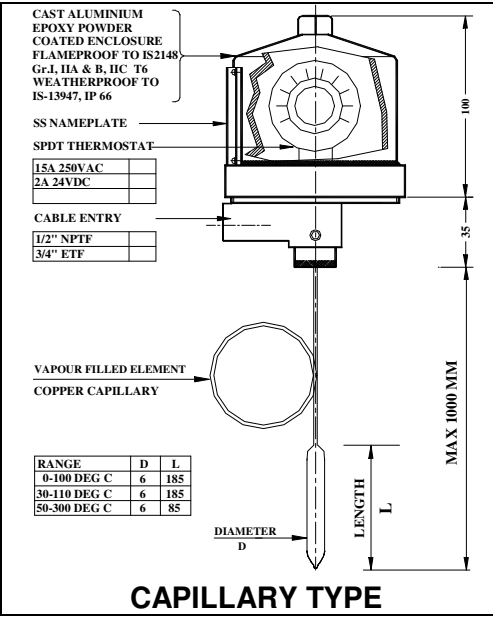
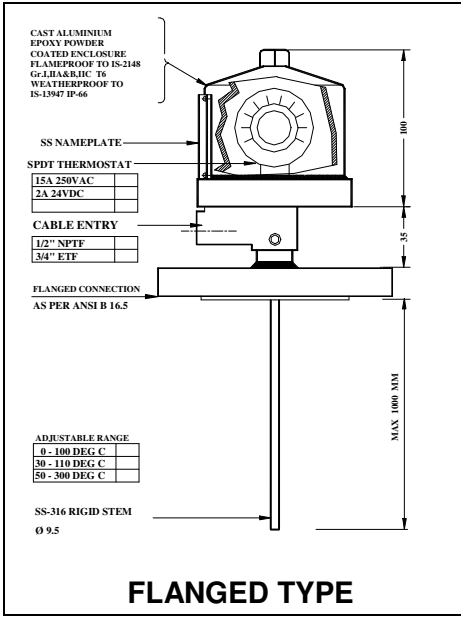
Differential : < 8% FSR

Accuracy : ± 2%

Repeatability : ± 1%

Switch Conn. : 1/2" / 3/4"NPTM, 1/2"BSPM adjustable connector, Flanged, direct welded

Output : SPDT potential free contact, 15A 250VAC / 5A 24VDC



Dag Process Instruments Pvt.Ltd.

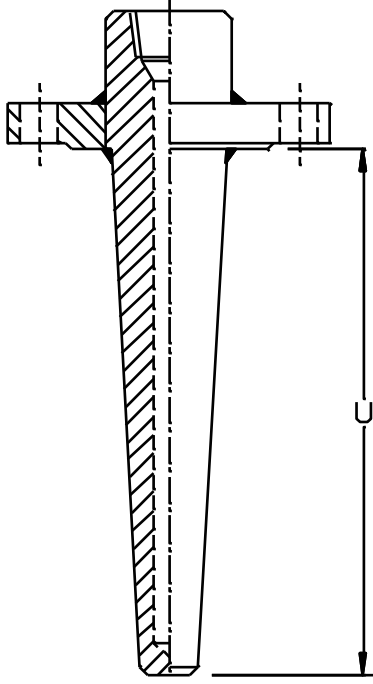
C4 Nandanvan Industrial Estate., Opp ACC Research Centre, LBS Marg, Thane 400604

Phone: 25812695, 25812710 Fax: + 91-22-25832311 Email: dagprocess@vsnl.com

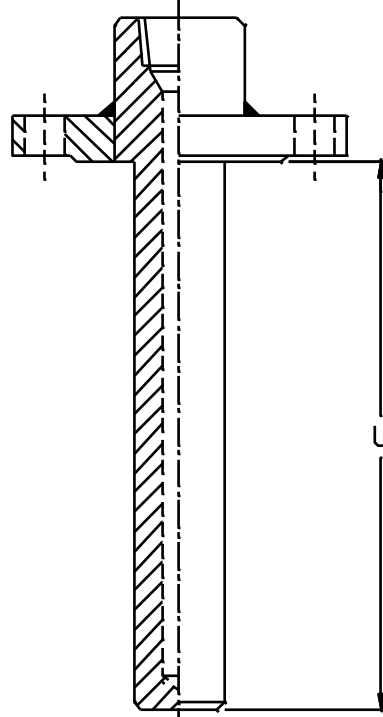
Manufacturers of Pressure, Level, Flow, Temperature Switches & Pressure, Air Flow Transmitters

Visit our site : www.dagprocess.com

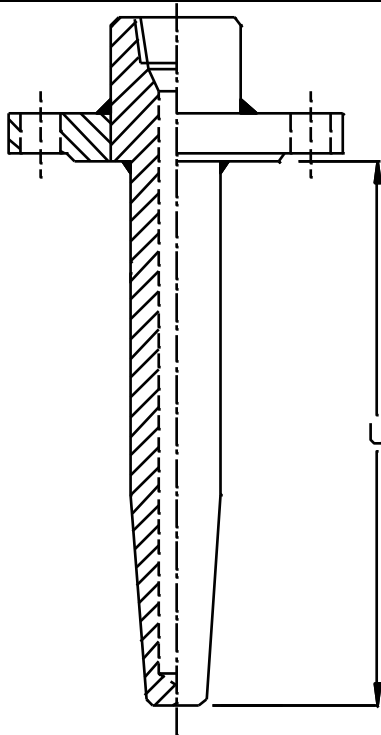
STANDARD DAG THERMOWELLS



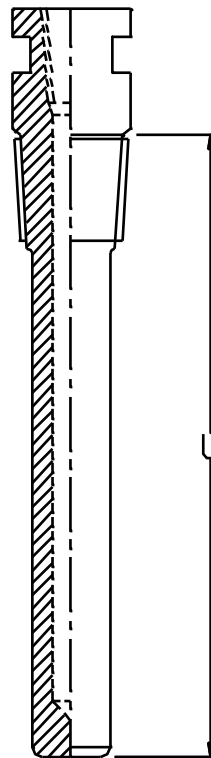
FLANGED TAPER



FLANGED STRAIGHT



FLANGED SEMI-TAPER



SCREWED STRAIGHT

| | |
|--------------------------|---|
| Temp. switch connection | : 1/2" NPTF, 1/2" BSPF |
| Process connection | : Flanged, Screwed (as per customer data) |
| Material of construction | : CS, SS304, SS316/L, (Others on request) |
| Type | : Drilled bar stock, Pipe fabricated |

Dag Process Instruments Pvt.Ltd.

C4 Nandanvan Industrial Estate., Opp ACC Research Centre, LBS Marg, Thane 400604

Phone: 25812695, 25812710 Fax: + 91-22-25832311 Email: dagprocess@vsnl.com

Manufacturers of Pressure, Level, Flow, Temperature Switches & Pressure, Air Flow Transmitters

Visit our site : www.dagprocess.com